

Lucia Pirzio-Biroli AIA, Principal
lucia@ectypos.com / 206 200 5242 mobile
Ectypos.com / +206 232 9147 office

RE: 8435 47 PL SE Mercer Island project.

I have personally inspected the information supplied for your project and the trees on site. What is attached is a brief discussion on the trees and proposed construction. A range finder was used to verify and set critical root zones and driplines.


I would like to address the north side of the driveway and possible root system encroachment. It is my professional opinion that encroachment will be within ISA limits. Onsite inspection revealed one 3" diameter root that will need to be cut and will not affect the tree involved. Due to the distance from any trees, it was not possible to identify which tree will be affected.

The length of the slope from high to low (12' +/-) is such that the main root bodies do not extend long enough to be majorly impacted by your proposed driveway.

The trimming as discussed with the Landscape Architect will amount to minor trimming of the trees on the south side of the driveway and that would be crown raising, again within ISA limits and will have no ill effects on the trees.

All tree protection measures to be in place before and work is started on your site. The project arborist to be on site for this installation. Arborists to be on site for initial driveway excavation also, this to assure proper root pruning of any found.

Respectfully Submitted

Neal Baker  2/11/22
ArboristsNW.com
ISA Cert. PN1075A
TRAQ ISA (Tree Risk Assessment Qualified)
Member AREA & SOCA

CITY OF MERCER ISLAND

COMMUNITY PLANNING & DEVELOPMENT

9611 SE 36TH STREET | MERCER ISLAND, WA 98040

PHONE: 206.275.7605 | www.mercergov.org



TREE INVENTORY & REPLACEMENT SUBMITTAL INFORMATION

EXCEPTIONAL TREES

Exceptional Trees- means a tree or group of trees that because of its unique historical, ecological or aesthetic value constitutes an important community resource. A tree that is rare or exceptional by virtue of its size, species, condition, cultural/historical importance, age, and/or contribution as part of a tree grove. Trees with a diameter of more than 36 inches, or with a diameter that is equal to or greater than the diameter listed in the Exceptional Tree Table shown in MICC 19.16 under Tree, Exceptional.

List the total number of trees for each category and the tree identification numbers from the arborist report.

Number of trees 36" or greater _____

List tree numbers: _____

Number of trees 24" or greater (including 36" or greater) _____

List tree numbers: _____

Number of trees from Exceptional Tree Table (MICC 19.16) _____

List tree numbers: _____

LARGE REGULATED TREES

Large Regulated Trees- means any tree with a diameter of 10 inches or more, and any tree that meets the definition of an Exceptional Tree.

Number of Large Regulated Trees on site _____ (A)

List tree numbers: _____

Number of Large Regulated Trees on site proposed for removal _____ (B)

List tree numbers: _____

Percentage of trees to be retained ((A-B)/Ax100) note: must be at least 30% _____ %

RIGHT OF WAY TREES

Right of Way Trees- means a tree that is located in the street right of way adjacent to the project property.

Number of Large Regulated Trees in right of way _____

List tree numbers: _____

Number of Large Regulated Trees in right of way proposed for removal _____

List tree numbers: _____

Reason for removal: _____

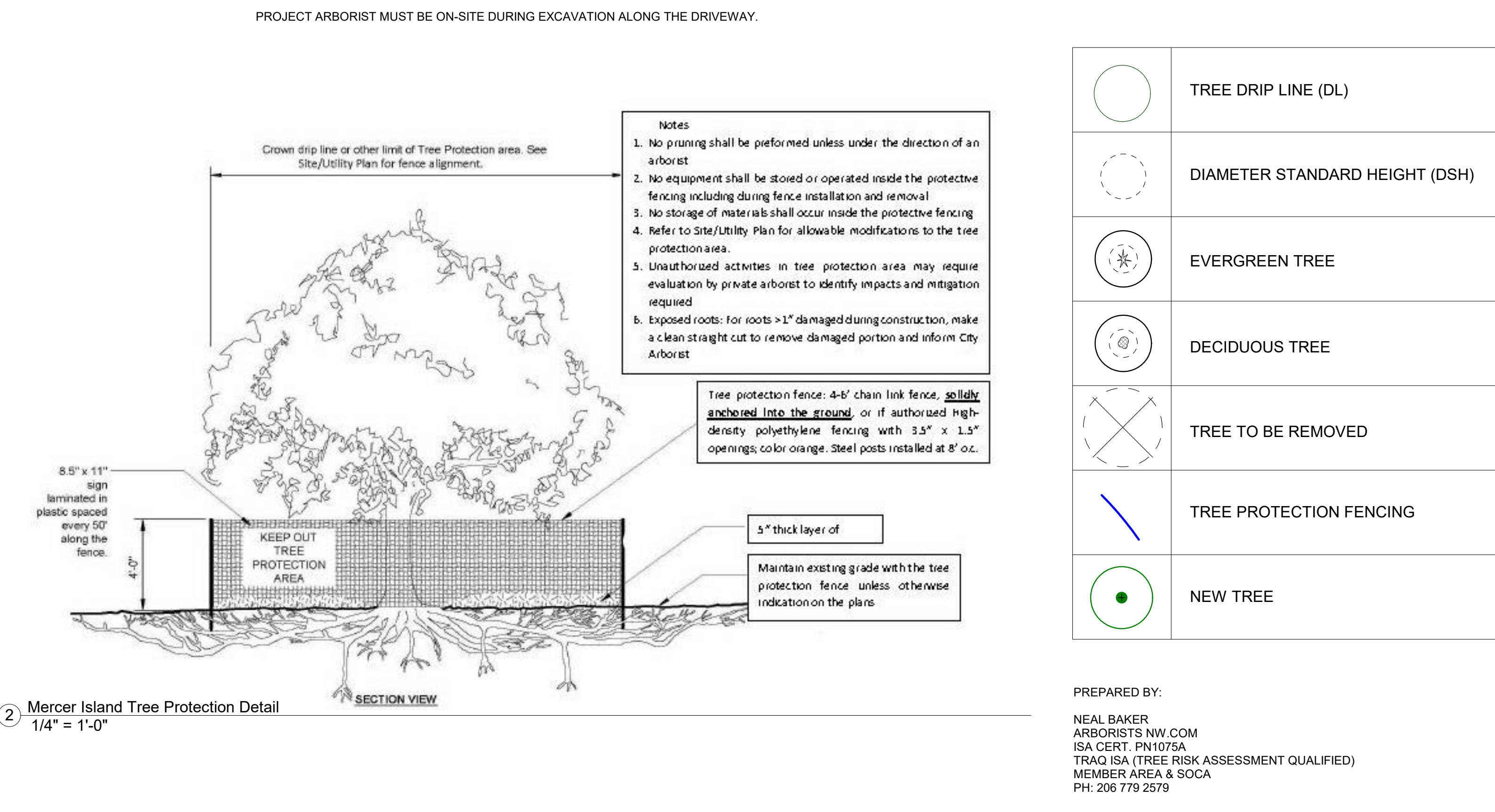
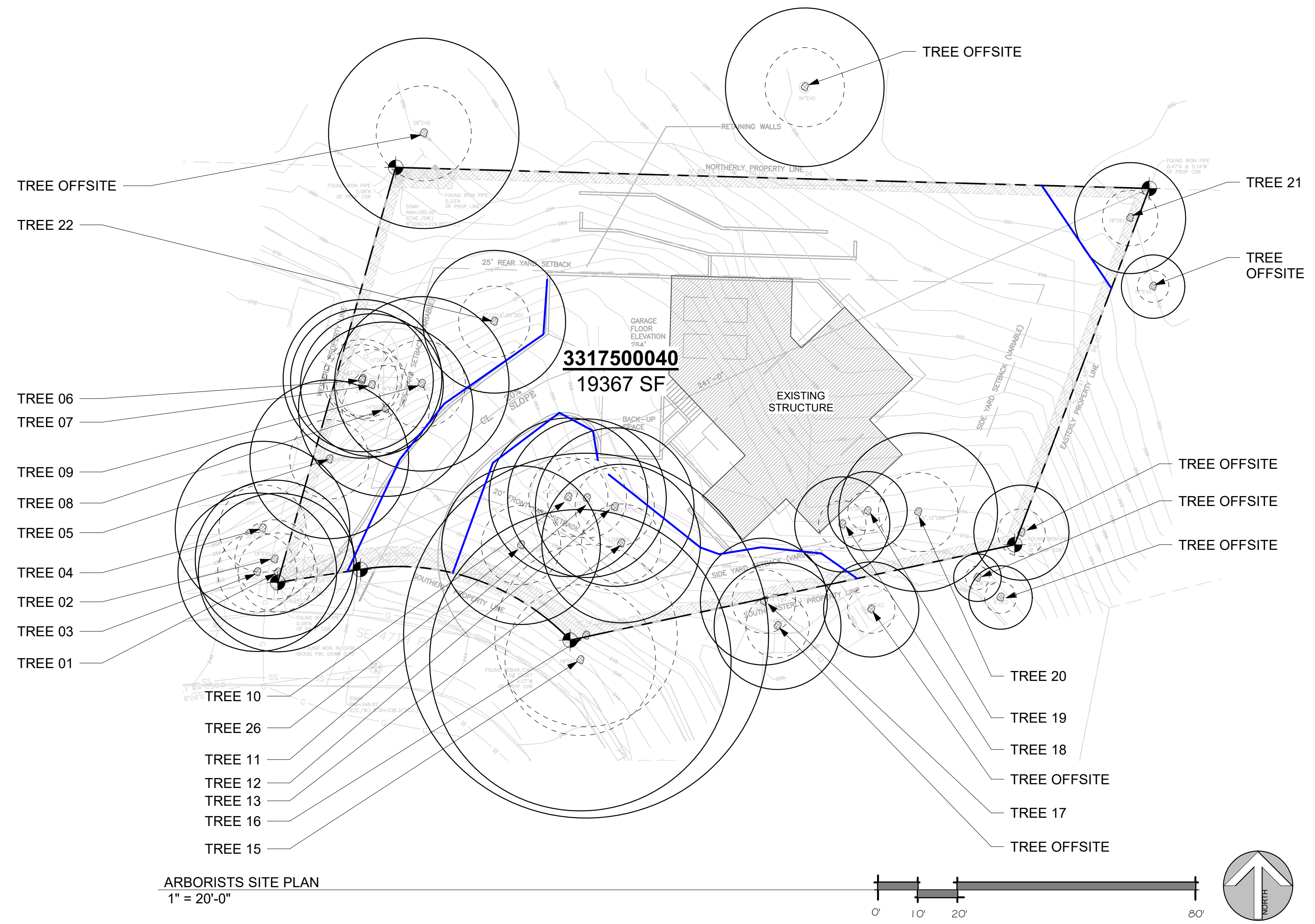
TREE REPLACEMENT

Tree replacement- removed trees must be replaced based on the ratio in the table below. Replacement trees shall be conifers at least six feet tall and or deciduous at least one and one-half inches in diameter at base.

Diameter of Removed Tree (measured 4.5' above ground)	Tree replacement Ratio	Number of Trees Proposed for Removal	Number of Tree Required for Replacement Based on Size/Type
Less than 10"	1		
10" up to 24"	2		
Greater than 24" up to 36"	3		
Greater than 36" and any Exceptional Tree	6		
TOTAL TREE REPLACEMENTS			

No.	Description	Date

Arborists NW Tree Inventory								
Tree Number	Common name	Scientific Name	# of Trunks	DBH (Inches)	Dripline (Feet)	Condition	Retain	Notes
1	DOUGLAS FIR	Pseudotsuga menziesii	1	14	19	FAIR	YES	
2	DOUGLAS FIR	Pseudotsuga menziesii	1	15	12	FAIR	YES	
3	DOUGLAS FIR	Pseudotsuga menziesii	1	18	12	FAIR	YES	
4	DOUGLAS FIR	Pseudotsuga menziesii	1	25	19	FAIR	YES	
5	DOUGLAS FIR	Pseudotsuga menziesii	1	21	20	FAIR	YES	
6	CHERRY	Prunus avium	1	16	12	FAIR	YES	
7	DOUGLAS FIR	Pseudotsuga menziesii	1	15	14	FAIR	YES	
8	BIG LEAF MAPLE	Acer macrophyllum	1	14	18	FAIR	YES	
9	BIG LEAF MAPLE	Acer macrophyllum	1	12	14	FAIR	YES	
10	BIG LEAF MAPLE	Acer macrophyllum	4	17.2	18	FAIR	YES	STUMP SPROUTED
11	BIG LEAF MAPLE	Acer macrophyllum	1	12	12	FAIR	YES	
12	BIG LEAF MAPLE	Acer macrophyllum	6	17.7	18	FAIR	YES	STUMP SPROUTED
13	BIG LEAF MAPLE	Acer macrophyllum	3	13.8	14	FAIR	YES	STUMP SPROUTED
14	BIG LEAF MAPLE	Acer macrophyllum	6	20.6	18	FAIR	YES	STUMP SPROUTED
15	BIG LEAF MAPLE	Acer macrophyllum	1	18	27	FAIR	YES	STUMP SPROUTED
16	BIG LEAF MAPLE	Acer macrophyllum	6	31	20	FAIR	YES	STUMP SPROUTED
17	DOUGLAS FIR	Pseudotsuga menziesii	1	16	14	FAIR	YES	
18	BIG LEAF MAPLE	Acer macrophyllum	5	17.4	14	FAIR	NO	STUMP SPROUTED
19	BIG LEAF MAPLE	Acer macrophyllum	1	10	18	FAIR	NO	
20	BIG LEAF MAPLE	Acer macrophyllum	3	13.6	18	FAIR	YES	STUMP SPROUTED
21	DOUGLAS FIR	Pseudotsuga menziesii	1	18	14	FAIR	YES	
14	#N/A		1					
15	#N/A		1					
16	#N/A		1					
17	#N/A		1					
18	#N/A		1					
19	#N/A		1					
20	#N/A		1					
21	#N/A		1					
22	#N/A		1					
23	#N/A		1					
24	#N/A		1					
25	#N/A		1					
26	#N/A		1					
27	#N/A		1					
28	#N/A		1					
29	#N/A		1					
30	#N/A		1					
Total DBH				355.3				
Retained DBH				327.9				
Retained Percentage				92.3%				



2 Mercer Island Tree Protection Detail
1/4" = 1'-0"

PREPARED BY:
NEAL BAKER
ARBORISTS NW.COM
ISA CERT. PN1075A
TRAQ ISA (TREE RISK ASSESSMENT QUALIFIED)
MEMBER AREA & SOCA
PH: 206 779 2579

ARBORIST TREE PLAN

Project number	21029
Date	-
Drawn by	CW
Checked by	NB

X100

Scale As indicated

84xx SE 47TH PL, MERCER ISLAND, WA 98040